

# 2002 Board of Directors



**Chair**  
Samuel W. Speck  
Ohio



**Vice Chair**  
Rep. Thomas E. Huntley  
Minnesota



**Immediate Past Chair**  
Nathaniel E. Robinson  
Wisconsin

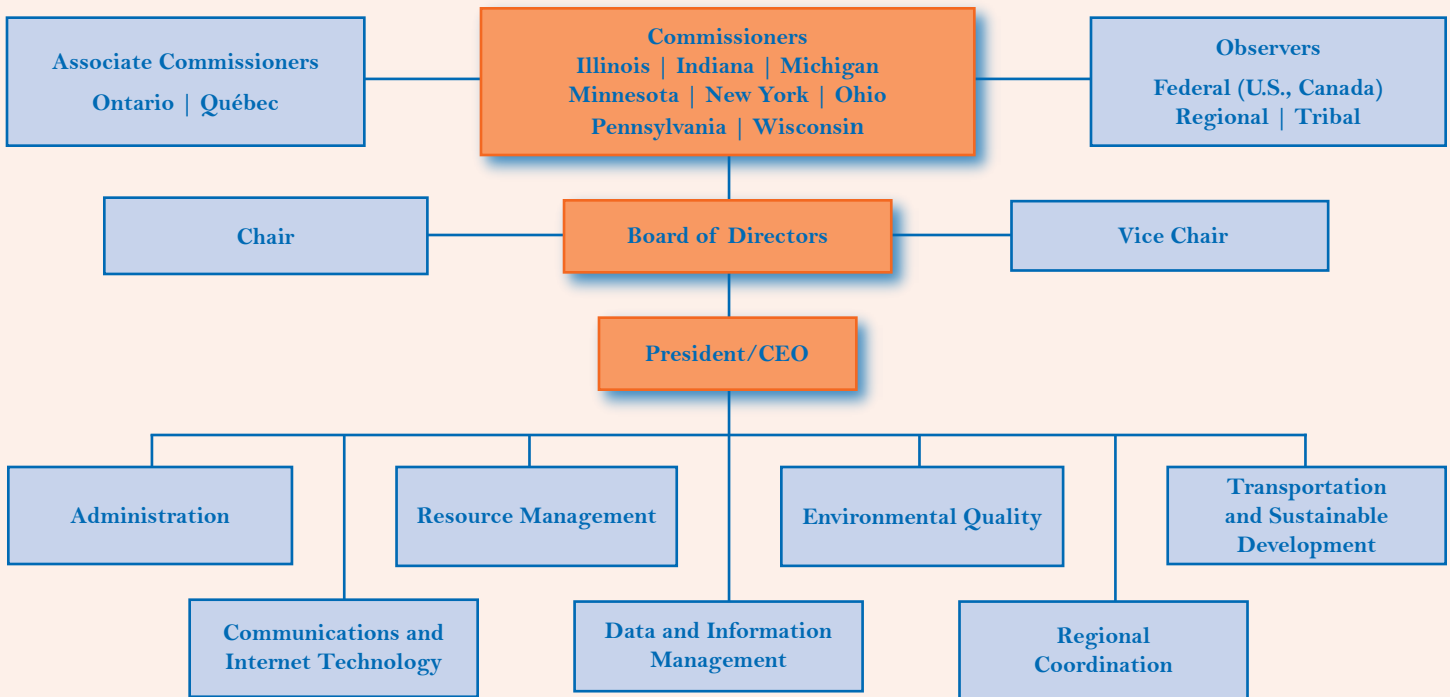


Irene B. Brooks  
Pennsylvania



Dr. Frank L. Kudrna  
Illinois

## Understanding *your* Commission



## About the Commission...

The Great Lakes Commission was established in 1955 via U.S. federal and state law to “promote the orderly, integrated and comprehensive development, use and conservation of the water resources of the Great Lakes basin.” With membership consisting of the eight Great Lakes states, and associate member status for the provinces of Ontario and Québec, the Commission pursues three primary functions: communications, policy research and analysis, and advocacy.

The Commission addresses a range of issues involving environmental protection, resource management, transportation and sustainable economic development. All activities are directed at realizing the vision of a prosperous economy, a healthy environment, and a high quality of life for citizens of the region.

Each member jurisdiction is represented by a delegation consisting of three to five members who are legislators, senior agency officials or appointees of the respective governor or premier. A board of directors, consisting of the chairs of each delegation, is the Commission’s executive body.

In carrying out its initiatives, the Commission works in close cooperation with many partner organizations, including U.S. and Canadian federal agencies, binational institutions, tribal/First Nation authorities and other regional interests. Representatives appointed by partner entities participate extensively in Commission activities through a formal Observer program.

The Commission is supported by a growing and experienced professional staff in Ann Arbor, Michigan.



David K. Ladd  
Michigan



Erin M. Crotty  
New York



John R. Goss  
Indiana



Bill Carr  
Ontario



Maurice Boisvert  
Québec

## The challenge is ours, the time is now

*Samuel W. Speck, Chair, Great Lakes Commission*



**Sam Speck** is the director of the Ohio Department of Natural Resources. Contact him at [sam.speck@dnr.state.oh.us](mailto:sam.speck@dnr.state.oh.us)

It is a great honor to have been elected chair of the Great Lakes Commission by my colleagues in this distinguished body, which bears a special responsibility to preserve and protect one of the world's most magnificent natural resources. Vice Chair Tom Huntley and I will do our utmost to merit the trust that has been placed in us.

I would also like to give a special thanks to Immediate Past Chair Nat Robinson for the energy, inspiration and vision he provided under his leadership and the results he helped us obtain.

This is an exciting time for us. The Great Lakes Commission has a number of absolutely critical contributions to make in advancing the region's environmental and economic well-being. No other organization possesses our experience in addressing Great Lakes issues, our capacity for coalition-building or our reputation for balanced, reasoned advocacy. And none is more ready to move ahead in its own right and assist others in doing so.

The challenges are many. But to be most effective, I believe we need to focus on the following:

We must continue to be a major partner in efforts to protect our waters from misuse, working with the Council of Great Lakes Governors to implement Annex 2001 to the Great Lakes Charter.

We must remain at the fore of efforts to develop a comprehensive Great Lakes

Restoration Plan. The Council of Great Lakes Governors drew heavily upon our *Great Lakes Program to Ensure Environmental and Economic Prosperity* in developing their own regional priorities and we are in an excellent position to promote further consensus among other regional interests.

We must redouble our efforts to meet the threat posed by aquatic invasive species. We worked hard in 2002 to help develop recommendations for legislation to reauthorize and strengthen the National Invasive Species Act; we must now impress upon Congress the urgent need to enact that legislation into law.

We must also work to ensure that Great Lakes navigation – the foundation upon which our regional economy was built – remains a viable and healthy part of our transportation infrastructure, through such projects as the new Soo Lock, reconciling trade and security needs, and the proposed Great Lakes transportation study.

This is indeed an exciting time for the Commission. The challenges are great, but so are the opportunities. If we do not accept them, who will? If not now, when? I suggest that we take as our answer, and as our motto, "Us-Now." Together, we can "Restore the Greatness" to the world's greatest system of fresh water, the Great Lakes.

**Samuel W. Speck**

# 2002 Commissioners and Alternates

## Illinois

- Frank Kudrna, Kudrna & Associates, Ltd.
- Pam McDonough, Dept. of Commerce and Community Affairs
- Anthony Ianello, Illinois International Port District
- Brent Manning, Illinois Dept. of Natural Resources (DNR)
- Ned Dikmen, Great Lakes Boating Magazine

## Alternates

- Donald Vonnahme, Illinois DNR
- Dan Injerd, Illinois DNR

## Indiana

- John Goss, Indiana DNR
- Ray Sierra, International Longshoremen's Association
- Gerry Nannenga, Gov. appointee
- Peter McCarthy, Indiana's International Port/Burns Harbor at Portage
- Lori Kaplan, Indiana Dept. of Environmental Management

## Alternates

- Stephen L. Lucas, Natural Resources Commission

## Michigan

- David Ladd, Michigan Dept. of Environmental Quality (DEQ)
- Jennifer Granholm, Attorney General
- Frank D'Itri, Michigan State University
- Walter North, State Senator
- William Callahan, State Representative

## Alternates

- Michael Leffler, Asst. Attorney General

## Minnesota

- Thomas Huntley, State Representative

- George Cassell, State Representative
- Ann Rest, State Senator
- Cal Larson, State Senator
- Mark Ludlow, Gov. appointee

## Alternates

- Edward Oliver, State Senator
- Henry Hanka, National Scenic Byways Resource Center

## New York

- Erin Crotty, New York Dept. of Environmental Conservation (DEC)
- Tom McAuslan, Port of Oswego Authority
- Sean Hanna, Gov. appointee
- John Francis O'Mara, Gov. appointee

## Alternates

- Gerald Mikol, New York DEC
- Donald Zelazny, New York DEC

## Ohio

- Sam Speck, Ohio DNR
- Christopher Jones, Ohio Environmental Protection Agency (EPA)
- George Ryan, Lake Carriers' Association
- Robert Gardner, State Senator
- Rex Damschroder, State Representative

## Alternates

- James Weakley, Lake Carriers' Association
- William Moody, Ohio DNR
- Jeffrey Busch, Ohio Lake Erie Office
- James Hartung, Toledo-Lucas County Port Authority

## Ontario

- Bill Carr, Ministry of Economic Development and Trade
- David de Launay, Ministry of Natural Resources

- Douglas Harper, Ministry of the Environment
- Jim Whitestone, Ministry of Transportation

## Alternates

- Paula Thompson, Ministry of Natural Resources
- Rod Taylor, Ministry of Transportation

## Pennsylvania

- Irene Brooks, Pennsylvania Dept. of Environmental Protection
- Sandy Smith, Erie Sand Steamship Co.
- Jane Earll, State Senator

## Québec

- Maurice Boisvert, Québec Government
- Andre Meloche, Ministry of Transportation
- Luc Berthiaume, Ministry of the Environment

## Alternates

- Nicole McKinnon, Department of International Relations
- Louise Lapierre, Ministry of the Environment
- Chantal Ouellet, Ministry of Transportation
- Steven Goyette, St. Lawrence Development Secretariate

## Wisconsin

- Nathaniel E. Robinson, Wisconsin Technical College System
- William Carey, Gov. appointee
- Thomas Kell, Gov. appointee

## Alternate

- Jeff Schoepke, Gov.'s Office

## Observers

- Stephen Brandt, Great Lakes Environmental Research Laboratory, National Oceanic and Atmospheric Administration (NOAA)
- Director, Great Lakes Science Center, U.S. Geological Survey (USGS)
- Charles Ehler, Office of Ocean and Coastal Resource Management, NOAA
- Christopher Goddard, Great Lakes Fishery Commission
- Maggie Grant, Council of Great Lakes Governors
- Gary Gulezian, Great Lakes National

Program Office, U.S. Environmental Protection Agency (U.S. EPA)

- Gerry Jackson, U.S. Fish and Wildlife Service
- Albert Jacquez, St. Lawrence Seaway Development Corp.
- Gail Krantzberg, International Joint Commission, Great Lakes Regional Office
- Patricia Leavenworth, Natural Resources Conservation Service, U.S. Department of Agriculture (USDA)
- Tony MacDonald, Coastal States Organization

- Jan Miller, U.S. Army Corps of Engineers
- Joseph Newberg, National Association of Conservation Districts
- Carl Richards, Great Lakes Sea Grant Network
- Mike Ripley, Chippewa Ottawa Resource Authority
- Rear Adm. Ronald Silva, U.S. Coast Guard, Ninth District
- Sheila Tooze, Canadian Embassy
- Gary Vequist, National Park Service
- Patrick Wilkey, U.S. Dept. of Energy

# Investing in *our* future

## Michael J. Donahue, President and CEO



Mike Donahue has directed Commission operations since 1987. Contact him at [mdonahue@glc.org](mailto:mdonahue@glc.org)

Looking back on 2002, one might conclude that it was a lousy year for investing – at least in the stock market. The opposite was true, however, for the Great Lakes Commission. Our membership invested heavily in the organization, and the organization did likewise in the future health and prosperity of the Great Lakes-St. Lawrence region. The outcome? An outstanding year by any measure!

Thanks to the leadership of Immediate Past Chair Nat Robinson, our new Chair Sam Speck and our board of directors, a sound investment was made in the Commission's infrastructure. We welcomed Ontario and Québec to our board of directors, adding an important new dimension to our work. We adopted our largest budget ever and dramatically increased staff size. We moved into a spacious new facility and made substantial progress in designing, with our partners, a new multi-agency home for a few years down the road. And, we established the Great Lakes Endowment to augment our resources and better respond to member and regional needs.

For our members, the return on this investment was immediate and lasting. Every dollar in dues, for example, leveraged nine more from other sources. On average, member states received more than three dollars in grants and pass-through funds for every dollar invested. Not a bad return these days!

*The ultimate measure of our investment strategy, of course, is the environmental and economic prosperity of the Great Lakes-St. Lawrence region. Without a doubt, this is a long-term proposition that demands a long-term investment.*

Organizationally, this investment resulted in two new program areas, expanded services, enhancement of technical specialties, and a rededication to a core mission: relentless and aggressive advocacy of the region's interests. The latter paid off handsomely through our *Great Lakes Program to Ensure Environmental and Economic Prosperity*, as many of its federal legislative and appropriations priorities were favorably received by Congress.

The ultimate measure of our investment strategy, of course, is the environmental and economic prosperity of the Great Lakes-St. Lawrence region. Without a doubt, this is a long-term proposition

that demands a long-term investment. On that journey, financial capital will be a necessary but insufficient condition for success. Vision, leadership and persistence are of equal value. Thankfully, this type of human capital is in abundant supply among our members, partners and other friends.

Thanks to all who helped us achieve the accomplishments presented on the pages of this annual report. And, thanks to all who have and will continue to invest in this tremendous resource. We are, indeed, well-positioned to "Restore the Greatness!"

A handwritten signature in black ink that reads "Michael J. Donahue". The signature is written in a cursive, flowing style.

Michael J. Donahue, Ph. D